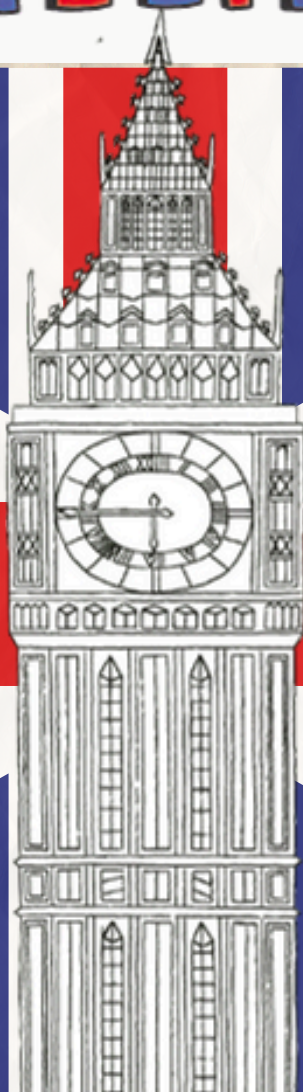


# LONDON CALLING



47<sup>TH</sup> Haute  
with Heart

St. Madeleine  
Sophie's Center

AUGUST 2, 2025



# THE GUILD HOTEL

*"A masterclass in  
merging old and new."*

*"Best Hotels in San Diego"*

**VOGUE**

**Forbes**

*"One of the Best Hotels in the World"*

**TRAVEL<sup>+</sup>  
LEISURE**

The Mansour Family is a Proud Supporter of St. Madeleine Sophie's Center

# TABLE OF CONTENTS

Menu.....	5
Fashion Show Program.....	6
Message from our CEO.....	7
Welcome from the Board.....	9
Honoree.....	11
Committee Members.....	12
Honorary Chair.....	13
Host Chairs.....	14
Featured Artist.....	16
Fashion Show Participants.....	17
Live Auction.....	19
Paddle Raise.....	24
Matching Grant.....	25
Producer.....	26
Sponsors.....	27
Thank You.....	28
Boutiques.....	29
Monthly Giving.....	30
Sophie's Gallery 25th.....	31
Upcoming Events.....	32
Garden Rentals.....	33
John Seiber.....	35
KEF Challenge.....	36



# Sycuan

CASINO • RESORT

PROUD SUPPORTER OF  
ST. MADELEINE SOPHIE'S CENTER AND  
THE 47<sup>TH</sup> ANNUAL HAUTE WITH  
HEART FASHION SHOW



**VISIT SYCUAN.COM**

MUST BE 21+ TO ENTER. PLEASE PLAY RESPONSIBLY.

# LONDON CALLING



## MENU

### Salad

#### Butter Lettuce

Fregola, Sun-dried tomatoes, Baked Ricotta Salata, Red Wine  
Basil Vinaigrette

### Entree

#### Short Ribs

With a Red Wine Demi-Glaze & Duchess Potatoes and Honey  
Glazed Carrots & Parsnips

### Entree (VIP)

#### Classic Beef Wellington

With a Red Wine Demi-Glaze & Duchess Potatoes and Honey  
Glazed Carrots & Parsnips

### Dessert

Alternate Drop

Sticky Toffee Pudding

Victoria Sponge Cake with Raspberry Jam & Whipped Cream

### Vegan/Gluten Free

Salad - Butter Lettuce

Entrée - Cauliflower Steak

Fennel Pollen-Roasted Cauliflower Steak, Wilted Tuscan Kale,  
Cauliflower Puree, Red Quinoa, Coriander Vinaigrette

Dessert - Pot de Crème Chocolate Raspberry

# LONDON CALLING



## EVENT SCHEDULE

*Greeting Performance*  
**Summer of Love**

*Invocation*  
**Sr. Virginia Rodee, RSCJ**

*National Anthem*  
**Mariela Contreras**

*Welcome*  
**Anna Couvrette & Audra Stafford**

*Acknowledgments*  
**Debra Emerson**

*SMSC Student Fashion Show*  
**Anna Couvrette & Audra Stafford**

*Live Auction*  
**Anna Couvrette**

*SMSC Student Spotlight*  
**Shauna Davis**

*Fund SMSC*  
**Anna Couvrette**

*Theatrical Fashion Show*  
**Kristi Brooks**

## **A MESSAGE FROM OUR CHIEF EXECUTIVE OFFICER**

We are delighted you could join us today for our 47th Haute with Heart Fashion Show at this beautiful Hilton San Diego Bayfront venue. Many of you may not know, but I was born in London, making this event especially sentimental for me. So, with heartfelt gratitude, I am excited to share this day and welcome you all to "London Calling."

Supporting Haute with Heart helps to fund SMSC's innovative programs. As you may know, State funding continues to decrease as program costs continue to increase. Your support today is needed more than ever! We continue to rely on your financial support to offset the daily shortfall we face every day.

This year, our show was inspired by Sophie's artist, Anthony Wardlow, and his one-of-a-kind piece "Big Ben". Kristi Brooks is producing our show once again, along with Redfearn and Associates for technical support. Plus, we welcome special guests, Master of Ceremonies Anna Couverte and Audra Stafford as our hosts for the afternoon. We are so thankful to our team of professionals who have worked so hard to create this "London Calling" experience for us.

We are thrilled to name Beverley "Bev" Ireland Honoree for this year's event. Bev owns Jasmine Creek Flower Shop and El Camino Florist; her floral designs have given our events a signature look for over 25 years.

We would like to thank our Presenting Sponsor, The Mansour Group and The Guild Hotel owned by the Mansour family, Fashion Icon Sponsors Sycuan Casino and Resort, Fashionista Sponsors Menard Family Foundation and Evelyn Favero-Heald, and Vogue Sponsors Charles Schwab, Ginger Poutous, and Noah Homes for helping us make this event possible.

I want to send a Special Thank you to John Seiber and congratulate him on his retirement. In the 33 years as President of the Kraemer Endowment Foundation, you have made an undeniable difference. After all you've done for SMSC, Congratulations on your retirement – it's well deserved!

### **Double the Impact of your Gift!**

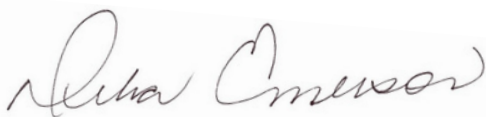
This year, our Matching Grant of \$65,000 was donated by Chris & Karen Ward and June Rubin in honor of her sister Linda. Every dollar raised will be matched up to \$65,000. Doubling your gift allows us to increase our efforts and continue to provide exceptional services. Together, we can make an even greater impact on our community. Get your paddles ready!

We are so honored to share Shauna Davis, our SMSC Student Representative for 2025, and her story as told by her mother Barbie Bates. Keep an eye out for Shauna as she walks the runway today with a big smile!

We give SPECIAL THANKS to Honorary Chair Ginger Poutous and Host Chairs Robbin and John Lockie. Also, the Host Committee, Honorary Committee, sponsors, donors, staff, students, families, elected officials, volunteers, Board of Trustees, Kraemer Endowment Foundation, boutique vendors, and our special entertainment.

A special THANK YOU for your continued support and encouragement of our dreams and goals for the future in our own special "London Calling" at St. Madeleine Sophie's Center 2025!

Cheerio! Until we meet again!

A handwritten signature in dark ink, reading "Barbara Emerson". The signature is fluid and cursive, with the first name "Barbara" and the last name "Emerson" clearly legible.

Chief Executive Officer  
St. Madeleine Sophie's Center



# **WELCOME FROM ST. MADELEINE SOPHIE'S CENTER BOARD PRESIDENT**

On behalf of the St. Madeleine Sophie's Center staff and Board of Trustees, I am honored to welcome you to the 47<sup>th</sup> Annual Haute with Heart Fashion Show and Luncheon, "London Calling".

It is wonderful to see a room filled with so many friends and supporters of St. Madeleine Sophie's Center. I always look forward to this incredible event, and I know so many of you do as well. I would like to acknowledge and thank our first-time attendees. Thank you for your support, and look forward to seeing you for many years to come.

Please join me in showing sincere appreciation to our generous sponsors, volunteers, and supporters, who work hard throughout the year to make this event possible.

This year our Honoree is Bev Ireland, AFID, owner of Jasmine Creek Flowers. Bev has been a dedicated supporter of St. Madeleine Sophie's Center for over 25 years. If you don't know Bev personally, you have seen her skill and artistry in the beautiful floral designs she has so skillfully crafted for so many events, including this Fashion Show. Bev has always been there when needed, working behind the scenes. It is now time to honor her in person. Thank you Bev!

I would like to thank each person in the room for attending and participating. This event would not be possible without you! Your current and continuing support will allow St. Madeleine Sophie's Center to sustain on its path to successfully providing programming to its students.

This event supports the over 375 St. Madeleine Sophie's Center students and the quality programs and specializations they are known for.

Your ongoing generosity, caring, and devotion to the Mission, Vision, and Values of St. Madeleine Sophie's Center is one of the reasons professionals, the community and most important, the students hold St. Madeleine Sophie's Center up as a benchmark for others to strive.

*Stuart Karasik*

Stuart Karasik, Ph.D.  
Board President



**I am proud to support the  
meaningful work of  
St. Madeleine Sophie's  
Center and congratulate  
them on another  
successful event raising  
essential funding for vital  
programs and services.**

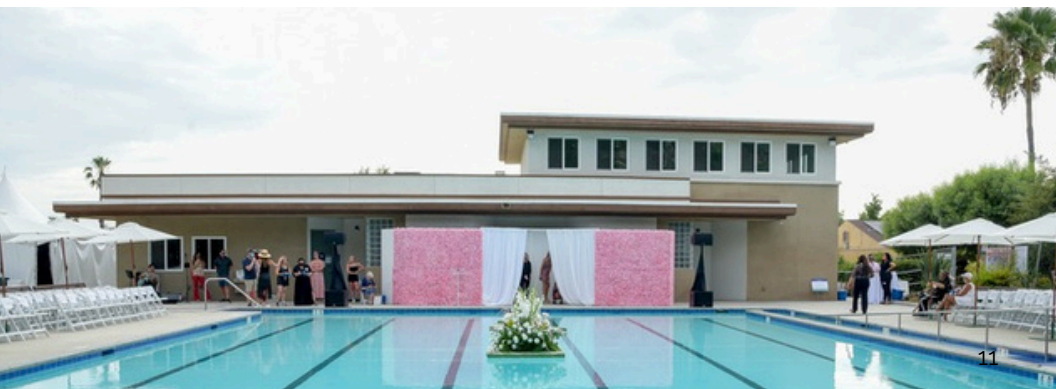
**Evelyn Favero-Heald**

# HONOREE BEVERLEY IRELAND

Beverley demonstrating floral arrangement at our first Morning Glory Brunch in 1997,



Beverley Ireland brings the beauty to our events with 25 years of gorgeous floral arrangements that create welcoming and inviting spaces for our guests. She was first introduced to St. Madeleine Sophie's Center when Debra Emerson, our CEO, asked her to give a floral demonstration during Morning Glory Brunch, a fundraiser for the Garden Program. "From the beginning, I was enchanted by the garden and Debra's vision of what it could become." Over the years, her participation grew to include the popular "Arts Alive" display, which pairs artwork by the artists of Sophie's Gallery with floral interpretations created by Bev and her staff that match and accentuate the artwork. "I also participate in the yearly Haute with Heart Fashion Show by creating a dress made entirely with fresh flowers and greenery, which follows the show's theme and is used as a focal point, greeting guests in the hotel lobby. When you see SMSC students walking on the runway, you are viewing the heart of SMSC's mission. Their joy and pride on the runway are just a fraction of the heart present daily on St. Madeleine Sophie's Center campus!



# COMMITTEE

St. Madeleine Sophie's Center would like to take this opportunity to thank our Honorary Chair, and Host Chairs along with the members of our Honorary and Host Committees, without whom this event would not be possible.

## **Honorary Chair**

Ginger Poutous

## **Honorary Committee**

Anne-Marie Finn Jewel

Cheryl Mitchell

Stephanie Young

Dee Ammon

Laura Applegate

Vince Heald

Maureen P King

David Mulvaney

Barbie Spinazzola

Maggie Watkins

## **Host Chairs**

Robbin and John Lockie

## **Host Committee**

Karen Cook - Lori Kay - Alexia Torres Kulek - John Lockie

Jane Moore - Ginger Owens - Ann Rodgers - Tessa Rodgers

Pat Robinson

# HONORARY CHAIR GINGER POUTOUS



As a board member, donor, development and event committee volunteer, Monthly Giver, and mother, Ginger Poutous has made a significant difference in the lives of persons with intellectual and developmental disabilities!



Ginger Poutous has supported St. Madeleine Sophie's Center for many years. She first learned about the center in 1970 when looking for opportunities for her son Jean, who was diagnosed with autism at a time when California did not educate children with intellectual and developmental disabilities. He attended SMSC for nearly 3 years before entering the public school system. Then in 2000, Ginger met Debra Emerson through the East County Leadership program, and after an invitation to tour our center, she was excited to see the growth in size and scope since her last visit. She joined the board soon after and has served intermittently over the past 20 years on the board and event committees.



Jean began working at a biotech company in El Cajon, where he worked successfully for 22 years until divisional job layoffs. He rejoined SMSC in 2018 and started working in the kitchen two days a week and in the garden. Among all his duties in the kitchen, Jean stated his favorite job is serving lunch to his friends!

Ginger was integral in helping to finance the Kraemer-Kleinbub Family Building and the McGrath Family Senior Center Building, among other initiatives. She is a Vogue Sponsor for Haute with Heart: London Calling, where Ginger and Jean look forward to his time in the spotlight on the runway; after all, they are pros, having modeled together at Haute with Heart many times over the years!

# HOST CHAIRS

## ROBBIN AND JOHN LOCKIE



Robbin and John Lockie, our Host Chairs for the 2025 London Calling 47<sup>th</sup> Haute with Heart Fashion Show and Luncheon, have been supporters of St. Madeleine Sophie's Center for over twenty-five years. Their son Sammy Kulek has been a student at our center since early 2020.



Robbin serves as the Treasurer of St. Madeleine Sophie's Center's Board and is an advocate for individuals with intellectual and developmental disabilities (IDD) with a focus on quality day services and housing options. In addition to her volunteer work at our center, Robbin has worked with local legislators and parents to advocate for better housing options for IDD individuals with high behavioral needs throughout San Diego County.

John is a retired teacher who worked with IDD individuals throughout his twenty-year career. The couple is committed philanthropically and by giving their time to ensure the students at our center continue to receive quality services and programming every day.



Their son Sammy loves attending St. Madeleine Sophie's Center and especially enjoys swimming at our Aquatics Center and working in our Organic Garden, as well as going out in the community with his friends from our program. Sammy started attending St. Madeleine Sophie's Center in the late 90s by participating in the Special Olympics Program. He is often called the "Campus Social Butterfly" and can be seen greeting all who attend and visit our lovely campus.



## EVERYONE DESERVES A LOVING HOME.

Noah Homes' mission is to provide exceptional residential care and choices for adults with intellectual and developmental disabilities within an inclusive community.

Scan the QR code to learn more about our programs and ways to get involved.



*Ginger & Jean  
Poutous*

**PROUDLY  
SUPPORT**

*St. Madeleine Sophie's  
Center*



## **FEATURED ARTIST** **ANTHONY WARDLOW**

My name is Anthony Wardlow, and I am an artist. I make art to express myself using pen, markers, mosaics, paint, and scratchboard. I started making art as a little kid and mostly drew airplanes. I love aircrafts and still enjoy drawing them! Most of my art looks like designs out of a blueprint, with perfect straight lines that I draw without a ruler. I am inspired by history, architecture, popular culture, and the world I see around me.

St. Madeleine Sophie's Center chose my drawing of Big Ben to reproduce on the invitation and marketing materials for the Haute with Heart: London Calling Fashion Show.

You never know—1,000 years from now, my art might be placed alongside the greatest artists in history, and my name known and renowned!

# FASHION SHOW

## SMSC Models

Cody Alves  
Faith Davies  
Andrew Fratangelo  
Marilyn Guidi  
Amy Mansour  
Jean Poutous  
Christina Shihata  
Matt Soares  
Laura Woody

## SMSC Featured Artist

Anthony Wardlow

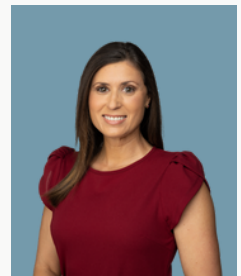
## SMSC Student Spotlight

Shauna Davis

## Emcees



Anna Couvrette  
*Auctioneer*



Audra Stafford  
*NBC 7 News  
San Diego*



In memory of  
Knox, June and Drue  
**WILLIAMS**

Loyal supporters of St. Madeleine Sophie's Center for 45 years

In appreciation for the 18 years of love and care that  
St. Madeleine Sophie's Center gave our brother, Drue.

Love Jeri Colaw, Jodi Wallis and Families.

# LIVE AUCTION

## A Night Out with Jasmine Creek Florist For Up To 6

*Donated by Jasmine Creek Florist*

Take yourself and five friends on a Tropical Flower journey led by Beverley Ireland AIFD at Jasmine Creek Florist. Each of you will make a tropical arrangement featuring exotic Hawaiian blooms like torch ginger, anthurium, orchids, heliconia, and birds of paradise accented with tropical foliage.

This class will be scheduled on a mutually agreeable date between September 1, 2025 and July 31, 2026. No exceptions please.

**Value: \$1,000**

## Napa Wine Tasting Experience

*Donated by GEN 7 Wines*

You and 5 guests will enjoy a custom 7-flight sensory tasting experience of GEN 7's hand-selected award-winning and limited Library and Vintner's Reserve wines, as well as enjoying a perfectly paired gourmet cheese and charcuterie board.

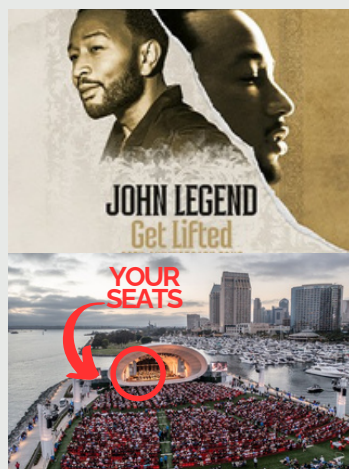
**Value: \$1,200**

## A Night with John Legend 2 Tickets for the Rady Shell Concert

*Donated by Judy Mantle and Hilton Bayfront Hotel*

Experience John Legend's Get Lifted 20<sup>th</sup> Anniversary Tour at the Rady Shell from the Left Marina on Sunday, November 23rd. Legend is an award-winning songwriter, singer, and pianist who blends R&B and soul. After being lifted by a true musical legend, walk to the Hilton Bayfront Hotel and enjoy a one-night stay in a standard room with breakfast for 2 guests and complimentary overnight self-parking.

**Value: \$1000**



# LIVE AUCTION



## Dinner Afield

### A Pop-Up Outdoor Meal For 12

*Donated by St. Madeleine Sophie's Center*

Enjoy a locally-produced 3-course meal at St. Madeleine Sophie's Center's 2-acre organic garden. You and your guests can sip local wine while walking through SMSC's beautiful garden and indulge in a "farm-to-table," dining experience. Meal based on a mutually agreed-upon menu designed by you and SMSC's Chef.

**Value: \$1,600**



## Paul McCartney

### Got Back Tour

*Donated by St. Madeleine Sophie's Center*

An evening with Sir James Paul McCartney at the Allegiant Stadium in Las Vegas., McCartney is the single most successful music artist of all time as the bass player and vocalist for The Beatles! \$1,000 Gift card toward a hotel stay is included.

**Value: \$2,300**



## Bivouac's Ciderworks

### Exclusive Brandy Tasting for 4

#### Inside Private Speakeasy

*Donated by Bivouac's Ciderworks*

Enjoy an exclusive experience in 'salon d'eau de vie,' the private brandy lounge hidden within North Park's popular, Bivouac Ciderworks. You and your guests will be treated to a Guided Brandy tasting by Bivouac's owner, Lara Worm. The salon d'eau de vie, inspired by Gertrude Stein's living room in 1920's Paris, features vintage furniture and glassware and art installations. Scheduling this evening is subject to the availability and coordination of your guests and the location.

**Value: Priceless**



# LIVE AUCTION

## Outrigger Kā'anapali Beach Resort

### 4-Night Stay In Premium Garden View Room up to 4 Guests

Outrigger Kā'anapali Beach Resort is a true Hawaiian paradise located on a stunning three-mile stretch of golden sand. This beachfront retreat offers an immersive cultural experience where the island's rich traditions come to life. Relax in well-appointed accommodations with a lush King or two Double beds. Indulge in first-class amenities, from a refreshing oceanfront pool to soothing spa treatments. Stay active with cultural workshops, hula lessons, and outrigger canoe paddling. Savor island-inspired cuisine at beachfront dining venues or enjoy a private meal with in-room dining. Unwind with nightly entertainment under the stars. Feel the spirit of aloha as you explore the beauty of Maui, with direct access to pristine white sand beaches and crystal-clear waters. Whether seeking relaxation or adventure, this beachfront haven offers an unforgettable Hawaiian escape.

**Value: \$4,216**



T · H · E  
FRAME  
STATION

Fine Custom Picture  
Framing

TOM SANDLER  
4085 Pacific Hwy  
San Diego, CA 92110

(619) 298-8558  
[www.framestation.biz](http://www.framestation.biz)

# LIVE AUCTION

## Under The Tuscany Sun Villa

**7-Night Stay In Tuscany for up to 6 Guests**

Immerse yourself in the enchanting countryside at these inviting retreats, each nestled among rolling hills, olive groves, or vineyard-lined vistas. Whether set in a lovingly restored farmhouse or a 19th-century gem, every property showcases the region's classic charm—think wooden beams, brick vaults, and cozy fireplaces—blended with modern amenities for your comfort. Outside, well-tended gardens and private pools invite you to unwind beneath the Tuscan sun or savor alfresco meals under the stars. Conveniently located a short distance from Cortona, these properties are the ideal base for exploring nearby wine bars, shops, and cultural treasures, while providing the peace and seclusion of a true Tuscan escape.

**Value: \$7,250**

## Villa Encanto

**Private Beach Front Estate  
7 -Night Stay for up to 16**

Spend 7 days and 7 nights in a magnificent private estate on the white sandy beach of the Bay of Banderas (8 miles north of Puerto Vallarta). This property must be seen to be believed! Perfect for a family getaway, wedding, anniversary, or to just gather friends and enjoy the incredible accommodations Villa Encanto has to offer. You can enjoy everything that this beautiful part of Mexico has to offer - golf, tennis, surfing, fishing, parasailing, jungle adventures, horseback riding, swimming with dolphins, all within the indescribable beauty of this pristine coastline.

**Value: \$ 22,000**



# Need personalized financial guidance?



Your local Financial Consultant, **Justin Wees**, is ready to help.

## San Diego Branch

7510 Hazard Center Dr, Ste 407  
San Diego, CA 92108  
(619) 380-1639  
[schwab.com/SanDiego](https://schwab.com/SanDiego)

Investment and Insurance Products: Not a Deposit • Not FDIC Insured • Not Insured by any Federal Government Agency • No Bank Guarantee • May Lose Value

There are eligibility requirements for working with a dedicated Financial Consultant.  
©2025 Charles Schwab & Co., Inc. ("Schwab"). All rights reserved. Member SIPC.  
CC12561428 (05/25-J1TP) ADP127781C-00 (05/25) SCH14131 (06/25)

# LEADING WITH LOVE

The University of San Diego is known for confronting humanity's challenges by fostering peace, working for justice and leading with love. USD is proud to support the vital work of St. Madeleine Sophie's Center — a place where, through innovation and education, adults with intellectual and developmental disabilities can become truly empowered for life.

SANDIEGO.EDU



University of San Diego®

# PADDLE RAISE

Your paddle raise will help cover the rising costs of our educational and recreational programs, which are designed to meet the unique interests of each student. Your gift will inspire and motivate our students while supporting the programs they love!

## **One Million**

Cut the Annual deficit in half.

## **Sixty Five Thousand**

Match the Match!

## **Twenty Five Thousand**

Rollin' Along! Fuel the buses for one month.

## **Ten Thousand**

Campus Maintenance for one month.

## **Five Thousand**

Music Therapy for one month.

## **Two Thousand Five Hundred**

Program supplies for one month.

## **One Thousand**

Make a splash and fund a month of pool supplies and upkeep.

## **Five Hundred**

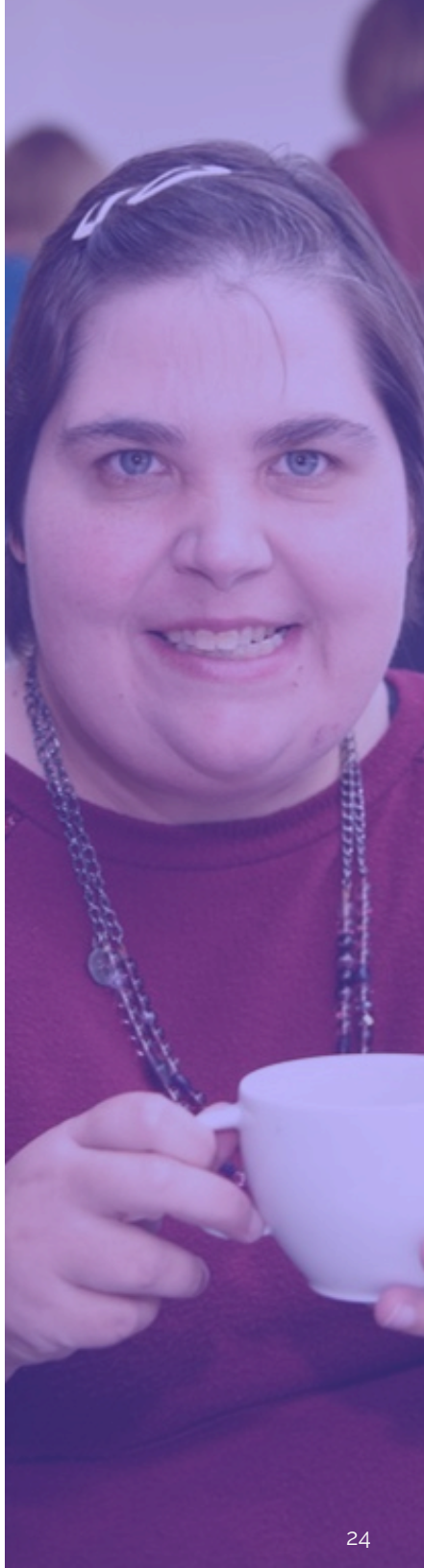
Dig in! Fund the garden program for one month.

## **Two Hundred Fifty**

Now we are cooking! Cover one week of culinary training.

## **One Hundred**

Fill the funding gap for a SMSC Student for one week.



# DOUBLE YOUR IMPACT AT HAUTE WITH HEART

Thanks to the incredible generosity of June Rubin and Chris & Karen Ward, we've received matching gift pledges totaling \$65,000 for this year's fashion show!



**The Rubin Family  
in Memory of  
Linda Rubin**

Every dollar raised  
today will be  
matched  
dollar-for-dollar,  
doubling your  
impact in supporting  
the students and  
programs at St.  
Madeleine Sophie's  
Center.



Your generous gift will go twice as far to help us reach our goal!

# FASHION SHOW

## Meet Fashion Show Producer Kristi Brooks

I spent a decade in L.A. dressing celebrities for everything from red carpet premieres to international press junkets with clients including Sharon Stone, Chloe Sevigny, Liam Hemsworth, and Scott Eastwood. I flew around the world in private jets, having private dinners with the world's top designers (spaghetti with Sylvia Fendi in Rome was a personal favorite!). While the Hollywood life was exhilarating, I knew when it was time to raise a family, I wanted to be back in San Diego, away from the limelight. Fifteen years of marriage and two kids later, I am settled in the Southern California countryside and still love fashion as much as ever, but have a newfound appreciation for functionality and practicality. Today you can find me producing fashion shows, styling editorials and celebrities, and appearing as an expert on several news networks.



**Thank you to Macy's for providing the clothing for  
the 2025 Haute with Heart Fashion Show**

# SPONSORS

St. Madeleine Sophie's Center would like to thank our sponsors for the success of this event.

## Presenting Sponsor

The  
Mansour  
Group™



ORAM  
HOTELS



## Fashion Icon Sponsors

*Sycuan*  
CASINO • RESORT

## Fashionista Sponsors



Menard Family  
Foundation

**Evelyn Favero-Heald**

## Vogue Sponsor



*Ginger Poutous*





# THANK YOU!

Rhonda James  
Kay Krueger  
Virginia Rodee  
Ginger Owens  
Barbara Thunder Barnes  
Judy Mantle  
Sean Mercadante  
Aaron Pomeroy  
Virginia Bayer  
Maureen Sage  
Stuart Karasik  
Julie Karlo  
Robbin Lockie  
Jane Moore  
Susan Schmidt  
Mary Ann Calcott  
San Diego Natural History Museum  
Sycuan Casino Resort  
Lamplighters Community Theatre  
Sky Sailing, Inc  
PRP Wine International  
Camp Bow Wow  
Pacific Southwest Railway Museum  
Cygnet Theatre  
Viejas Casino & Resort  
Unicorn Jewelry  
Rancho Bernardo Inn  
San Diego Air and Space Museum  
Coronado Playhouse  
Bowlero  
The Frame Station

## **Volunteers**

The Padres Volunteer Team  
USD Nurses  
Paul Mitchell Hair and Beauty School

# BOUTIQUES

Be sure to visit our boutique vendors. Being here today they are supporting St. Madeleine Sophie's Center by donating 25% of their sales.

**Amber Persia Fabulous Jewelry & Things**

**Connee J Designs**

**Blissful Seeds**

**Satori Designs**

**Designs by Eileen**

**Be Boutique**

**Sophie's Gallery**

*Be Boutique* 

  
**Blissful Seeds**

**Satori**  
D e s i g n s



The San Diego Alumnae/Alumni of  
the Sacred Heart warmly congratulates  
**St. Madeleine Sophie's Center**  
as it celebrates

**Haute with Heart  
London Calling**

Thank you for nurturing the  
potential in each individual.

# JOIN MONTHLY GIVING

## Monthly Giving Special Offer London Calling!

*Receive 2 FREE tickets to  
St. Madeleine Sophie's Center's*

*60th Anniversary*

**Fashion Show in 2026 when you join Monthly Giving  
on August 2, 2025**

Sign up in person at this year's fashion show or online at [www.stmsc.org](http://www.stmsc.org).  
Make a Monthly donation of \$100 or more to qualify.  
Continue monthly payments through June 2026 to claim FREE tickets.

***One Day Only!***

**Sign up for Monthly Giving on August 2, 2025**

**Valid for 1<sup>st</sup> time Monthly Givers or those existing Monthly Donors  
who increase their Monthly Gift to \$100 or more.**

*Thank You!*

**BECOME A CHAMPION OF THE FUTURE**



Receive your Monthly Giving Pin  
when you sign up for Monthly Giving

**[WWW.STMSC.ORG](http://WWW.STMSC.ORG)**

Contact Joe Perucca at 619.442.5129 ext. 332  
or [jperucca@stmsc.org](mailto:jperucca@stmsc.org) for more information



Scan the QR code to donate  
and click the recurring gift tab.

Sophie's Gallery

25<sup>th</sup>



Anniversary



This year marks the 25<sup>th</sup> anniversary of Sophie's Gallery, celebrating a legacy of art projects and hundreds of regional, national, and international art shows. Sophie's Gallery is a creative space for artists with intellectual & developmental disabilities to express themselves. Run by St. Madeleine Sophie's Center, the art program gives students a chance to create and learn a variety of art media, such as printmaking, jewelry design, mosaics, painting, fabric arts, and more.

# SMSC EVENTS

## Alley Cat | September 12

Stroll through the downtown El Cajon Art Galleries at the annual Alley Cat Art Walk. ENJOY a FREE evening of fine art, live music, vendors, beer, and a community art contest. Plus Passageways: Sea Life with art exploring life in the ocean and the experiences of living by the coast, and celebrating donated, up-cycled & reimaged materials.



## Spookeasy | October 11

Join us for Spookeasy: Blackout Party, an outdoor Halloween celebration in a secret garden—featuring eerie blacklight décor, a live DJ, costume contest, scavenger hunt, gourmet food, unlimited drinks, and an exclusive cigar bar. Dress to glow and support St. Madeleine Sophie's Center with a night of spooky fun and good vibes!

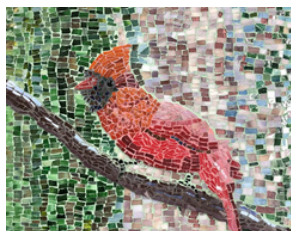


## Wings and Snow | December 12

Join Sophie's Gallery for their annual Winter Art Show. Revisit holidays past at Sophie's Gallery & celebrate the conclusion of our 25th anniversary year. Featuring prints of customer-favorite pieces from past Wings & Snow and other show collections—archival sale of paintings, mosaics, prints & more. New works include fiber art, angels, and snowmen.



Artwork sales directly impact Sophie's artists and art program, with 40% going to the artists and 60% to the art program. Don't miss out!



## Tea by the Sea | January 17

Join us for complimentary signature cocktails, hors d'oeuvres, tea by the sea, opportunity drawing, shopping & live music! Proceeds benefit the Sophie's Gallery art program.



# *Celebrate Life's Special Moments in Our Garden!*



Host your wedding, shower, or party in our charming 2-acre organic garden, a peaceful, nature-filled space that gives back. When you rent with us, you're not just creating memories, you're supporting programs that uplift adults with developmental and intellectual disabilities.

*A beautiful space with a beautiful mission.*

Now booking weekends!



Please contact [events@stmsc.org](mailto:events@stmsc.org)



# **Menard Family Foundation**

*Celebrating 25yrs of enriching lives  
locally and globally*

**Menard Family Foundation  
is pleased to support  
St. Madeleine Sophie's Center.  
We congratulate you on this  
47th Haute with Heart Fashion  
Show and Luncheon!**

# JOHN SEIBER

## **Celebrating over 30 Years of Service and Dedication**

After extraordinary years of service to St. Madeleine Sophie's Center, we celebrate the remarkable legacy of John Seiber as he steps down from his role as Chairman of the Kraemer Endowment Foundation. John's journey with our organization began in 1992 when he joined as the Director of the Kraemer Endowment Foundation. His leadership qualities and passion for our mission quickly became evident, and in 1995, he stepped into the role of Chairman, a position he has held for nearly three decades. John will continue to serve on the KEF Board as Chairman Emeritus.



Under John's visionary leadership, the Kraemer Endowment Foundation has grown from \$200,000 in 1992 to its current state of over \$16,000,000, ensuring the long-term existence of St. Madeleine Sophie's Center. Through his guidance, the foundation has consistently championed our mission, providing critical funding that has allowed our programs to flourish and expand. St. Madeleine Sophie's Center expresses our profound gratitude for his three decades of exceptional service. His legacy will continue to touch the lives of our students for generations to come. The programs he helped to support and the foundation he helped strengthen will remain lasting testaments to his dedication. Thank you, John, for your service, leadership, and friendship. Your legacy at St. Madeleine Sophie's Center will be remembered and cherished always.

# KRAEMER ENDOWMENT FOUNDATION CHALLENGE MATCH FOR THE MCGRATH FAMILY SENIOR CENTER

Every dollar raised today will be matched dollar-for-dollar, doubling your impact in supporting the new senior center and improving the lives of our senior population on campus.

*news*  
**FLASH**

Thanks to the incredible generosity of the Kraemer Endowment Foundation, we've received a matching challenge totaling **\$500,000** for our new senior center!



# 50th Anniversary Campus Improvement Goals Met

## ✓ New Aquatics Center

locker rooms, office and storage facilities,  
pool deck repairs, and new equipment

## ✓ McGrath Family Senior Center

common room, art studio, computer lab,  
kitchen, classrooms

## ✓ Page Family Pavilion

renovation of former Ghio Building with common  
double pane windows, new roof, covered patio  
area

## ✓ Solar Energy System

campus-wide

## ✓ Security System

54-cameras campus-wide

# Total: \$10,000,000